

**Selected Drill Core Photographs
UGCB18-86, UGCB18-88 & UGCB18-89
(Press Release 30/5/18)**



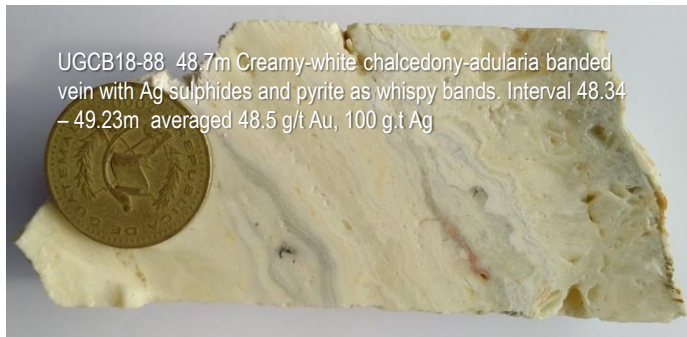
UGCB18-86 44.5m Oxidized and leached lattice texture - quartz after calcite (boiling texture) 31.0 g/t Au, 54 g/t Ag



UGCB18-86 50.7m colloform banded chalcidony with argillization and abundant fine grained gold associated with Ag sulphides 170.8 g/t Au, 421 g/t Ag



UGCB18-86 50.6 – 51.8m Fine grained Au visible at end of pointer (white circle) associated with black AgS bands. Chlorite-clay selvages with diss py.

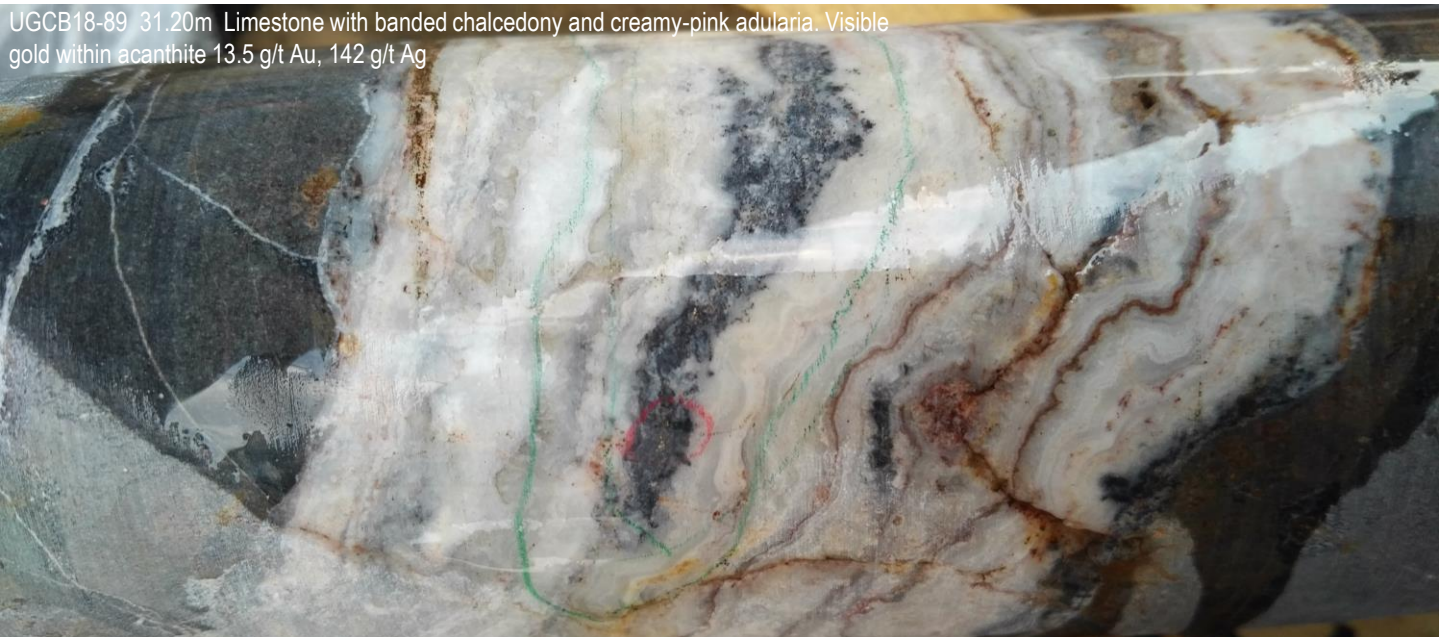


UGCB18-88 48.7m Creamy-white chalcidony-adularia banded vein with Ag sulphides and pyrite as wispy bands. Interval 48.34 – 49.23m averaged 48.5 g/t Au, 100 g/t Ag



UGCB18-86 45.96 - 46.79m Brecciated vein. Banded chalcidony clasts with oxide-clay-calcite matrix. 0.7 g/t Au, 4.7 .gt Ag

UGCB18-89 31.20m Limestone with banded chalcidony and creamy-pink adularia. Visible gold within acanthite 13.5 g/t Au, 142 g/t Ag

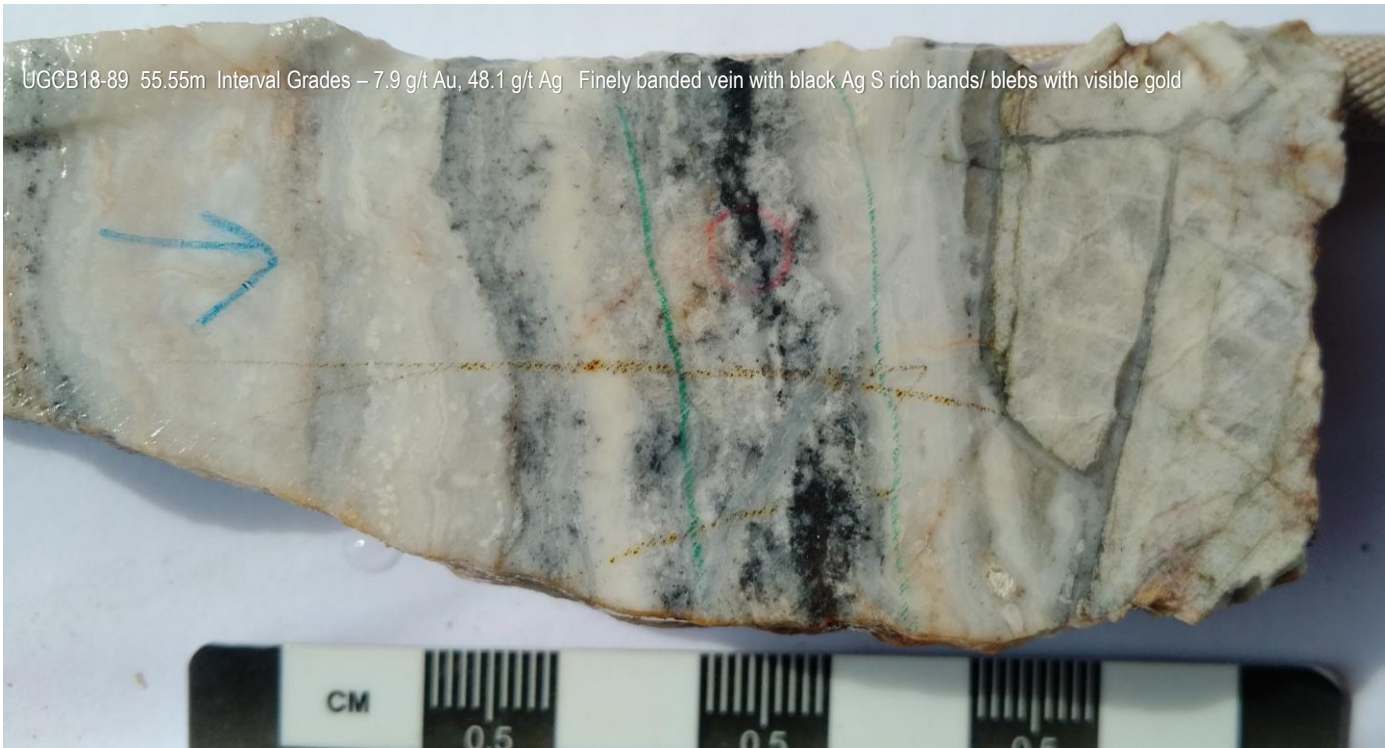


Selected Drill Core Photographs
UGCB18-89
(Press Release 30/5/18)

UGCB18-89 53.2m Interval Grades – 52.51 – 53.51 163.3 g/t Au, 1,202 g/t Ag
Finely banded colloform chalcedony with pink adularia? and minor calcite. Black banding consist of dark silica, Ag Sulphides, py and minor gold



UGCB18-89 55.55m Interval Grades – 7.9 g/t Au, 48.1 g/t Ag Finely banded vein with black Ag S rich bands/ blebs with visible gold

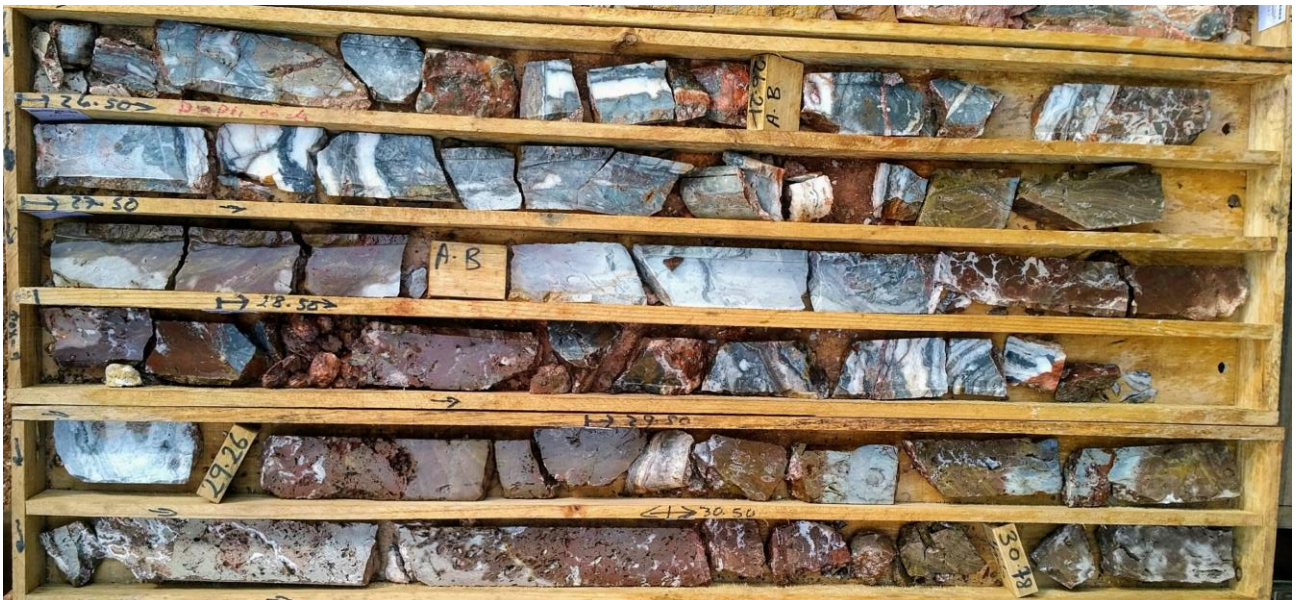


Selected Drill Core Photographs
UGCB18-86
(Press Release 30/5/18)

UGCB18-86 88.69 – 95m - 6.31m / 13.27 g/t Au, 98.15 g/t Ag Partially oxidized brecciated vein zone, with fine grained banded chalcodony with weak ginguru banding of dark chalcodony and AgS. Red clay matrix, green smectite clays with diss pyrite.



UGCB18-86 26.5 – 30.5m 4m / 28 g-t Au, 116 g.t Ag



**Selected Drill Core Photographs
UGCB18-79, UGCB18-80, CB 396
(Press Release 15/5/18)**

Bluestone
RESOURCES INC.

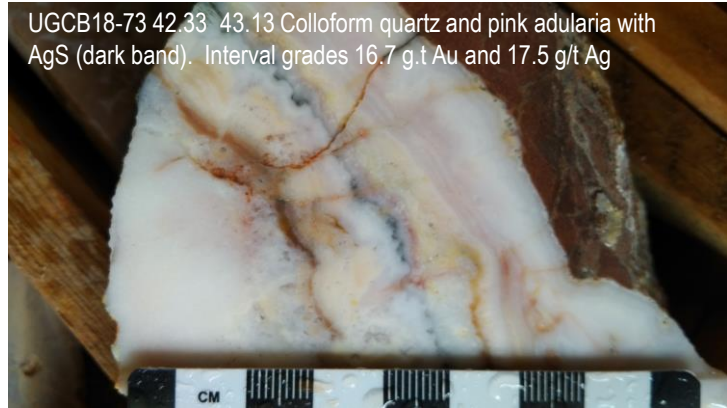


CB 396
Section of Vein VS- 01
243.47 – 245.48m
2.01m @ 7.6 g/t Au, 14.7 g/t Ag

Selected Drill Core Photographs
UGCB18-71, UGCB18-73, UGCB18-74,
UGCB18-75, UGCB18-76
(Press Release 17/4/18)

Bluestone
RESOURCES INC.

UGCB18-73 42.33 - 43.13 Colloform quartz and pink adularia with AgS (dark band). Interval grades 16.7 g/t Au and 17.5 g/t Ag



UGCB18-74 39.32m Banded chalcidony adularia with AgS bands and blebs Interval runs 2.61m / 10.1 g/t Au , 28.7 g/t Ag



UGCB18-74 74.68m Partilly oxidized quartz vein, banded chalcidony, green/grey bands

UGCB18-76 40.6m Fine grained dark grey chalcidony and chert (?) with fine acanthite (silver mineral)



UGCB18-75 45.72 - 46.56 Brecciated and silicified sandstone (Mbt) with narrow banded quartz-adularia veinlets Interval runs 21.5 g/t Au, 125 g/t Ag



UGCB18-71 21.4m Colloform quartz and pink adularia - 43 g/t Au



UGCB18-76 12.61 - 16.53m - 3.92m / 26.82 g/t Au, 84.42 g/t Ag Contact between sanstone and silicified limestone, minor quartz veinlets and crustorm quartz veining

