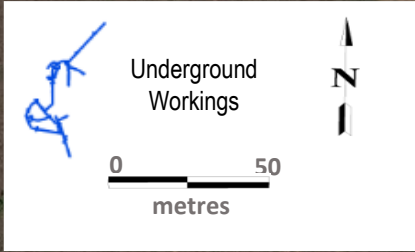
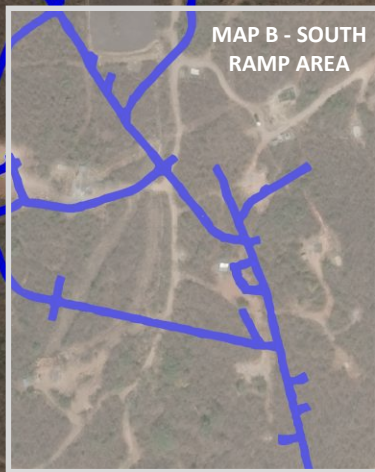


UNDERGROUND INDEX MAP



Mine Portal

North Ramp

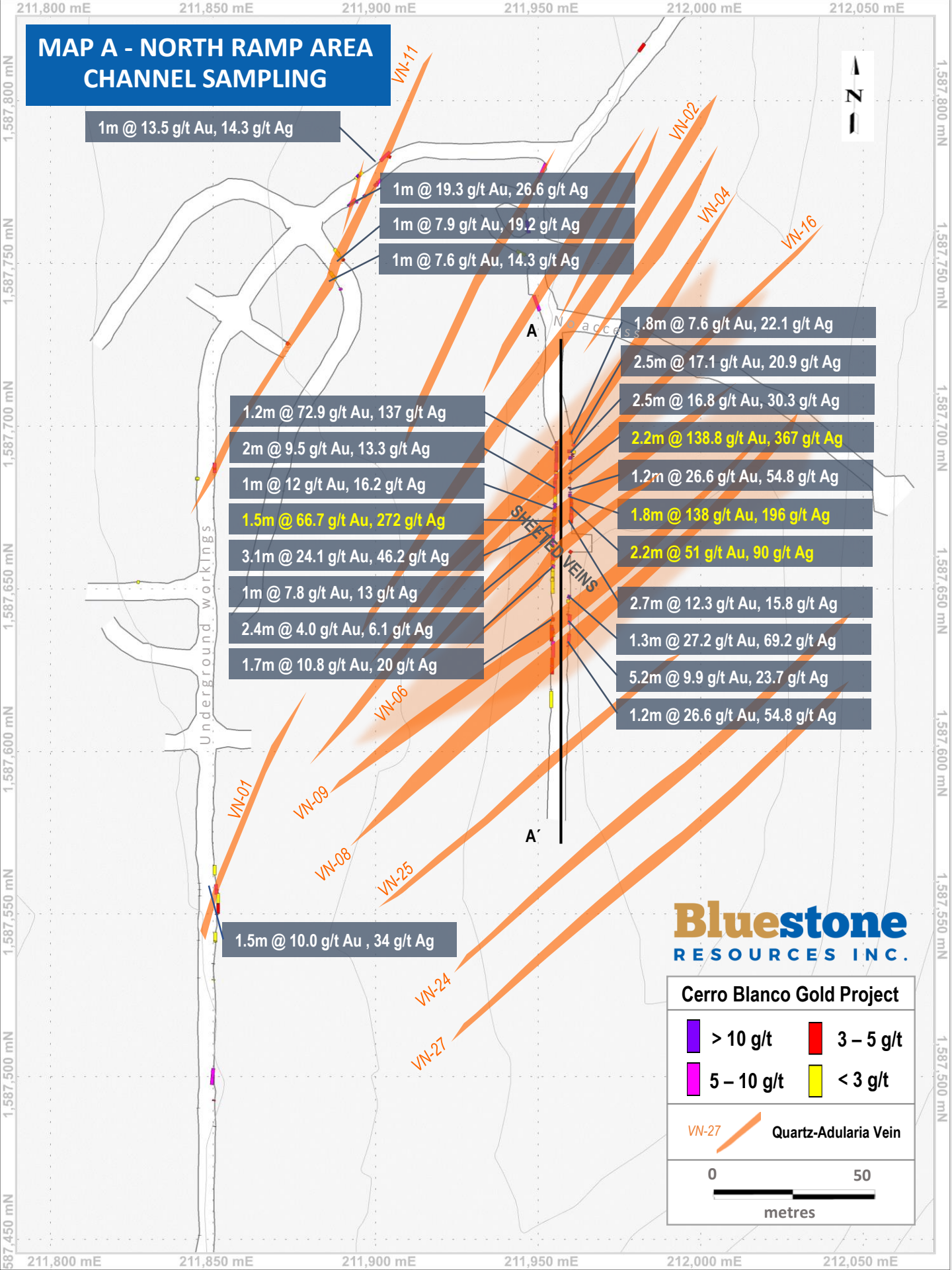


South Ramp Portal

Bluestone
RESOURCES INC.

Cerro Blanco Project

MAP A - NORTH RAMP AREA CHANNEL SAMPLING



1m @ 13.5 g/t Au, 14.3 g/t Ag

1m @ 19.3 g/t Au, 26.6 g/t Ag

1m @ 7.9 g/t Au, 19.2 g/t Ag

1m @ 7.6 g/t Au, 14.3 g/t Ag

1.2m @ 72.9 g/t Au, 137 g/t Ag

2m @ 9.5 g/t Au, 13.3 g/t Ag

1m @ 12 g/t Au, 16.2 g/t Ag

1.5m @ 66.7 g/t Au, 272 g/t Ag

3.1m @ 24.1 g/t Au, 46.2 g/t Ag

1m @ 7.8 g/t Au, 13 g/t Ag

2.4m @ 4.0 g/t Au, 6.1 g/t Ag

1.7m @ 10.8 g/t Au, 20 g/t Ag

1.8m @ 7.6 g/t Au, 22.1 g/t Ag

2.5m @ 17.1 g/t Au, 20.9 g/t Ag

2.5m @ 16.8 g/t Au, 30.3 g/t Ag

2.2m @ 138.8 g/t Au, 367 g/t Ag

1.2m @ 26.6 g/t Au, 54.8 g/t Ag

1.8m @ 138 g/t Au, 196 g/t Ag

2.2m @ 51 g/t Au, 90 g/t Ag

2.7m @ 12.3 g/t Au, 15.8 g/t Ag

1.3m @ 27.2 g/t Au, 69.2 g/t Ag

5.2m @ 9.9 g/t Au, 23.7 g/t Ag

1.2m @ 26.6 g/t Au, 54.8 g/t Ag

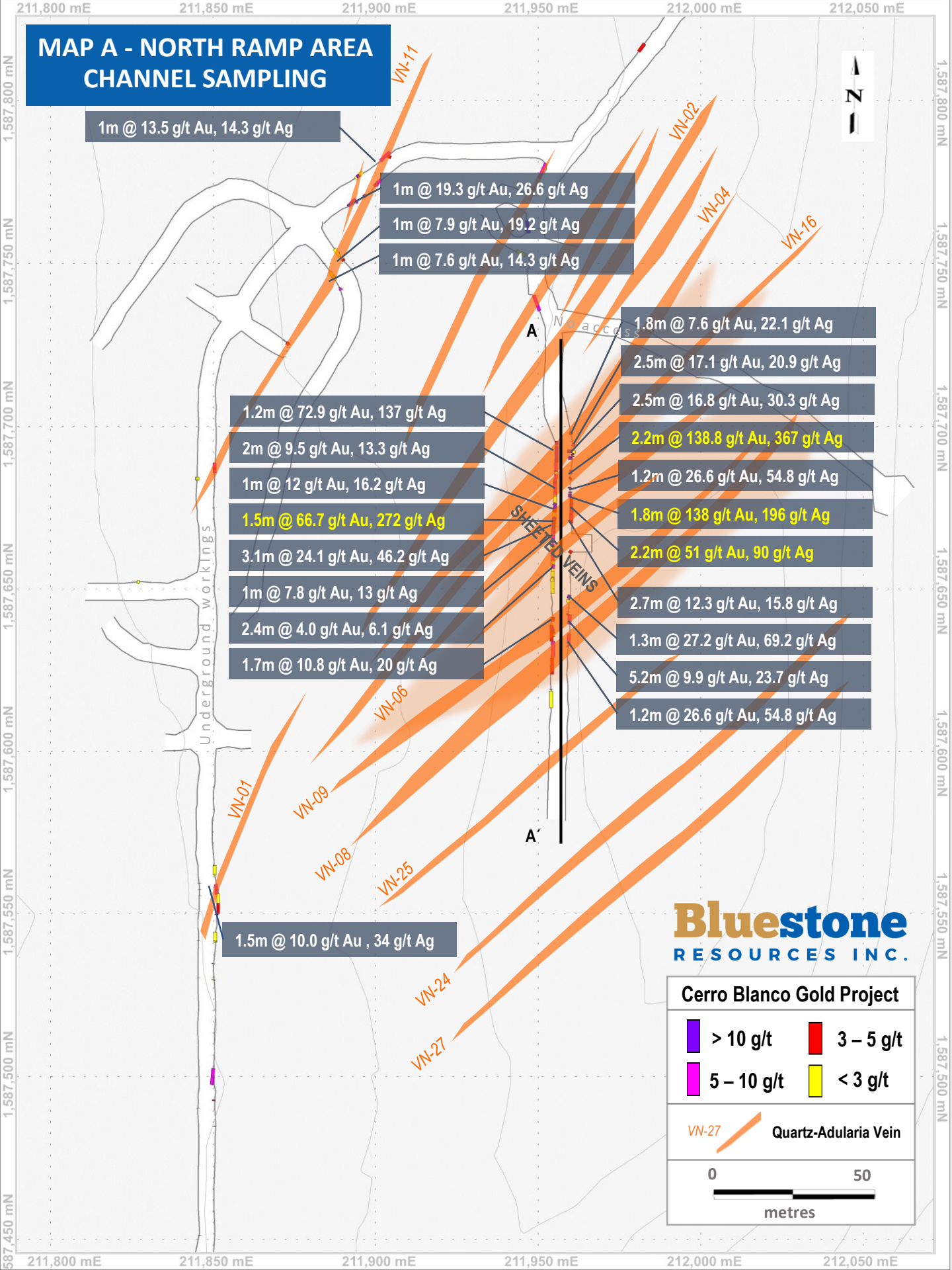
1.5m @ 10.0 g/t Au, 34 g/t Ag

Bluestone
RESOURCES INC.

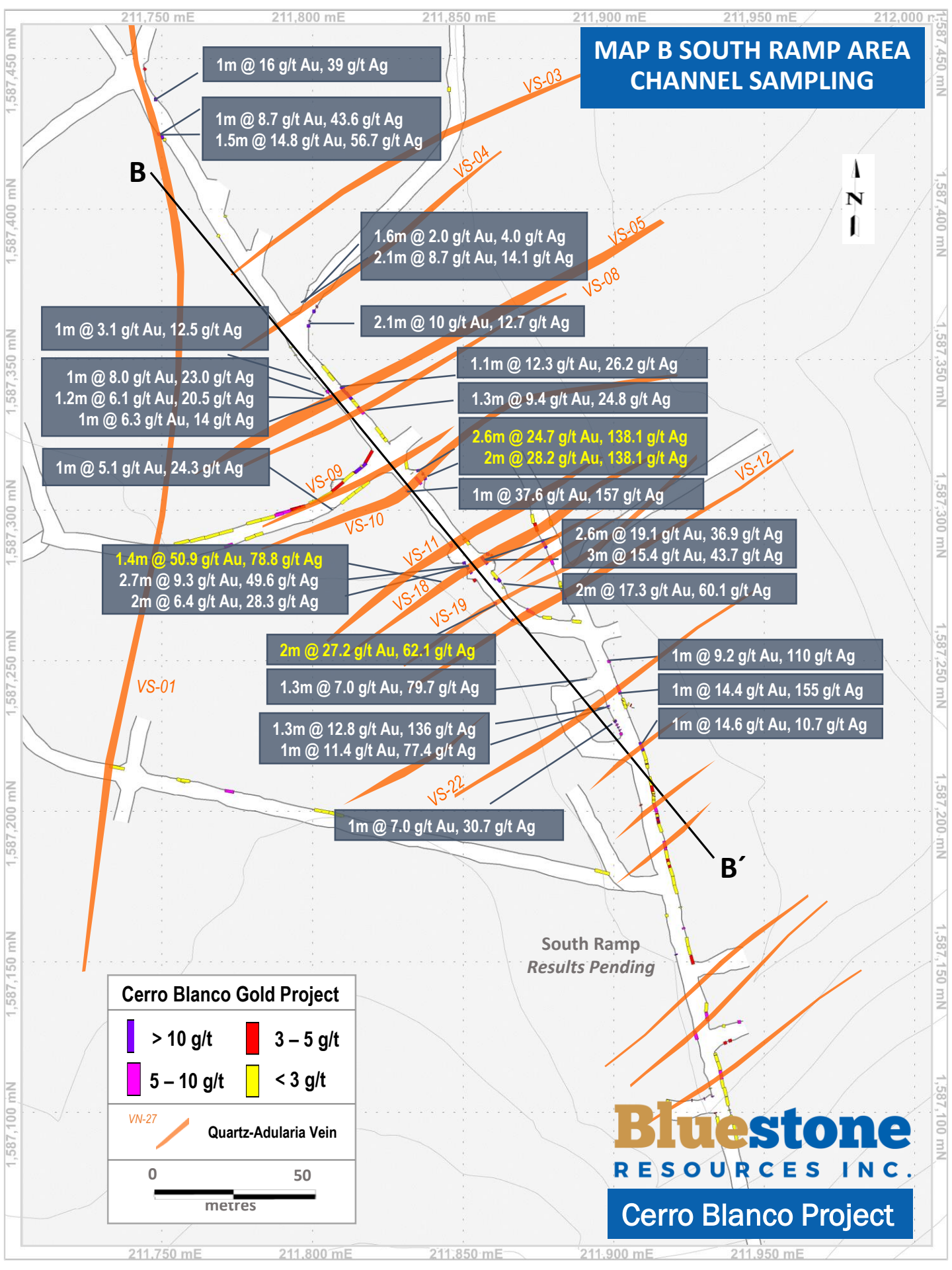
Cerro Blanco Gold Project

- > 10 g/t
- 5 – 10 g/t
- 3 – 5 g/t
- < 3 g/t

VN-27 Quartz-Adularia Vein



MAP B SOUTH RAMP AREA CHANNEL SAMPLING



1m @ 16 g/t Au, 39 g/t Ag
 1m @ 8.7 g/t Au, 43.6 g/t Ag
 1.5m @ 14.8 g/t Au, 56.7 g/t Ag

1.6m @ 2.0 g/t Au, 4.0 g/t Ag
 2.1m @ 8.7 g/t Au, 14.1 g/t Ag

1m @ 3.1 g/t Au, 12.5 g/t Ag

2.1m @ 10 g/t Au, 12.7 g/t Ag

1m @ 8.0 g/t Au, 23.0 g/t Ag
 1.2m @ 6.1 g/t Au, 20.5 g/t Ag
 1m @ 6.3 g/t Au, 14 g/t Ag

1.1m @ 12.3 g/t Au, 26.2 g/t Ag

1.3m @ 9.4 g/t Au, 24.8 g/t Ag

1m @ 5.1 g/t Au, 24.3 g/t Ag

2.6m @ 24.7 g/t Au, 138.1 g/t Ag
 2m @ 28.2 g/t Au, 138.1 g/t Ag

1m @ 37.6 g/t Au, 157 g/t Ag

1.4m @ 50.9 g/t Au, 78.8 g/t Ag
 2.7m @ 9.3 g/t Au, 49.6 g/t Ag
 2m @ 6.4 g/t Au, 28.3 g/t Ag

2.6m @ 19.1 g/t Au, 36.9 g/t Ag
 3m @ 15.4 g/t Au, 43.7 g/t Ag

2m @ 17.3 g/t Au, 60.1 g/t Ag

2m @ 27.2 g/t Au, 62.1 g/t Ag

1m @ 9.2 g/t Au, 110 g/t Ag

1.3m @ 7.0 g/t Au, 79.7 g/t Ag

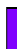



1m @ 14.4 g/t Au, 155 g/t Ag


1.3m @ 12.8 g/t Au, 136 g/t Ag
 1m @ 11.4 g/t Au, 77.4 g/t Ag

1m @ 14.6 g/t Au, 10.7 g/t Ag

1m @ 7.0 g/t Au, 30.7 g/t Ag

Cerro Blanco Gold Project

 > 10 g/t	 3 – 5 g/t
 5 – 10 g/t	 < 3 g/t

 VN-27 Quartz-Adularia Vein

0 50 metres

South Ramp
Results Pending

Bluestone
RESOURCES INC.

Cerro Blanco Project

