

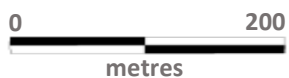


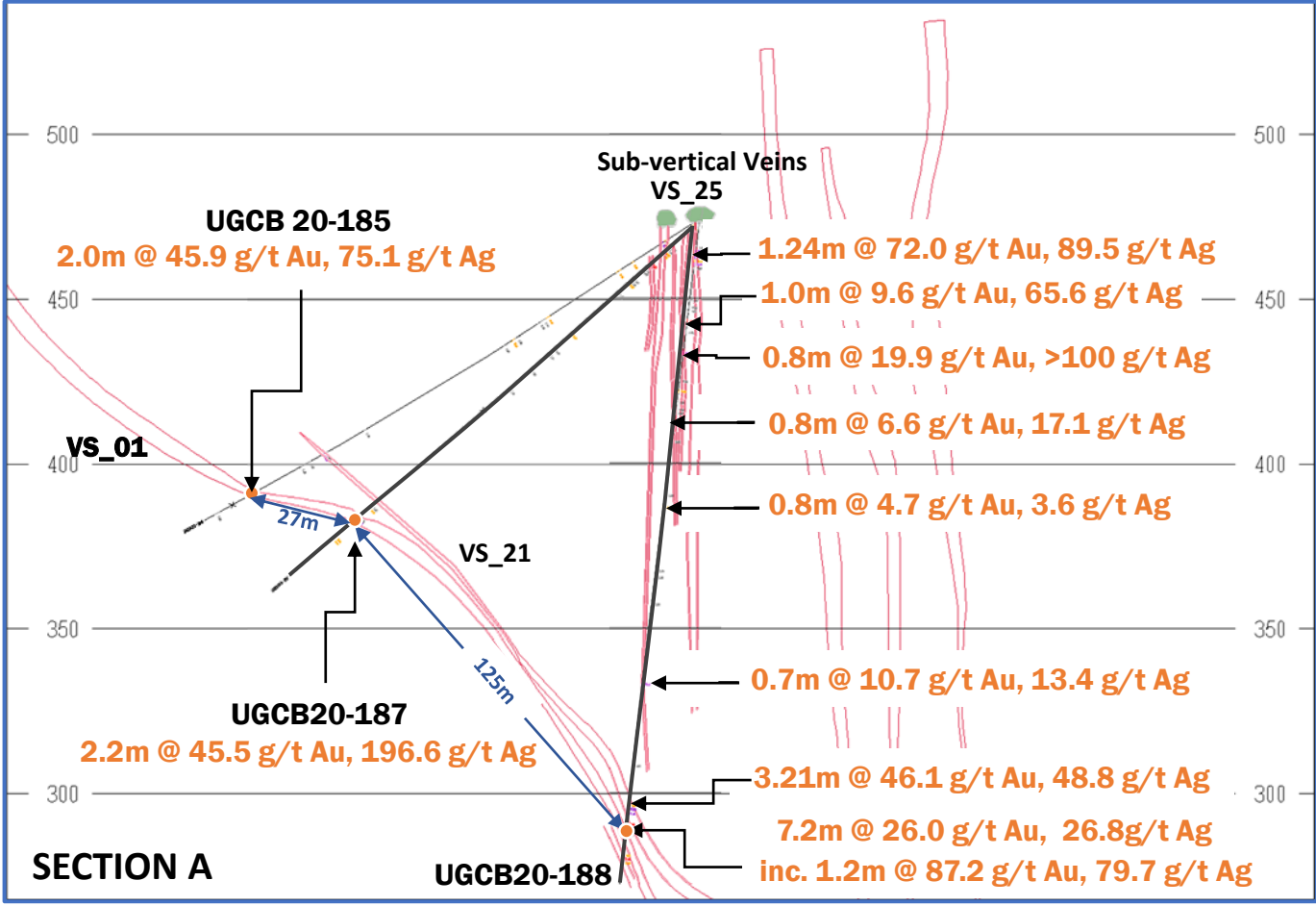
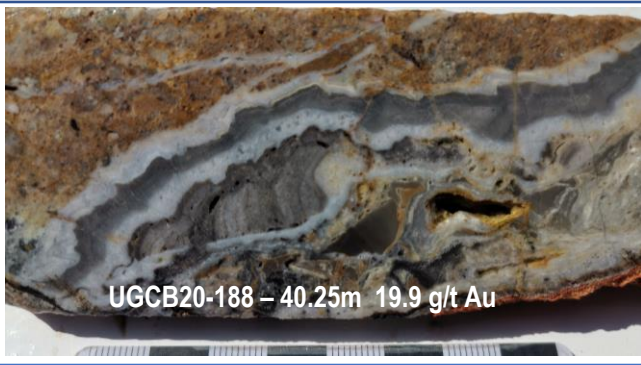
Figure 1
Drillhole Locations

Bluestone
RESOURCES INC.

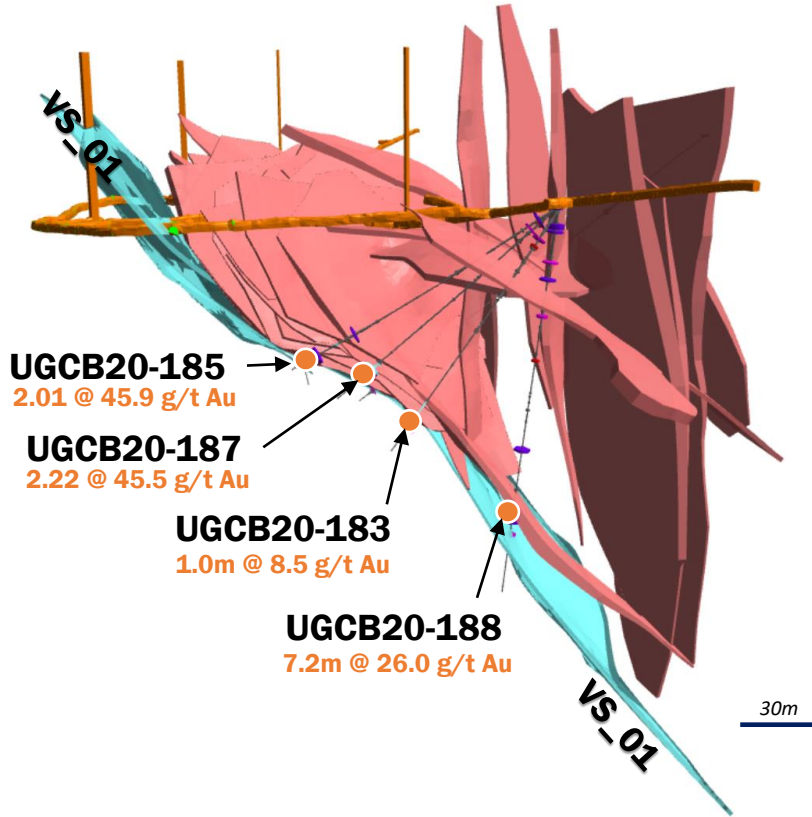
Cerro Blanco Project

 Drill hole
UGCB19-183 Drill holes reported this Press Release
 Quartz-Adularia Vein


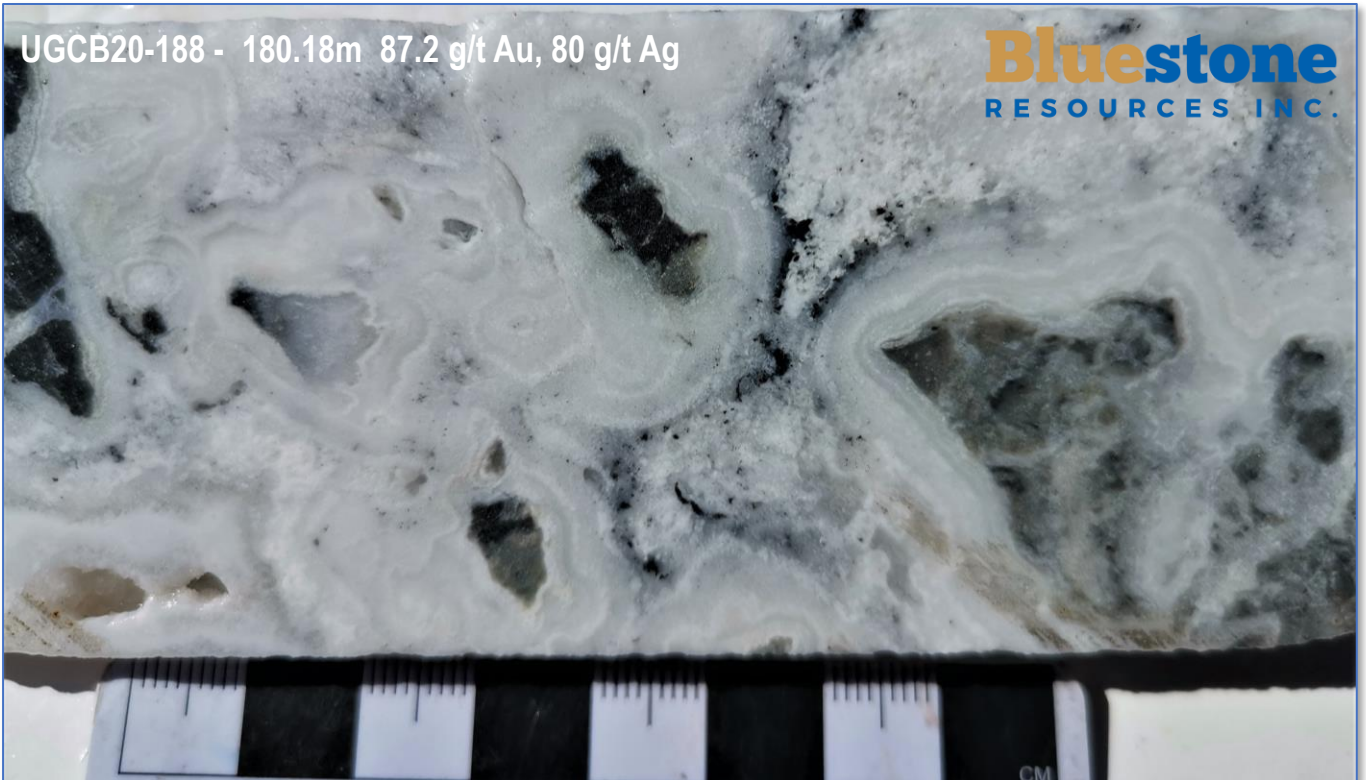
| HOLE_ID | PLATFORM | EAST | NORTH | ELEVATION | AZIMUTH | DIP | FINAL DEPTH |
|------------|-----------|------------|-------------|-----------|---------|-----|-------------|
| UGCB20-183 | ESUG13-04 | 211938.117 | 1587126.316 | 473.264 | 269 | -54 | 163.07 |
| UGCB20-184 | ESUG12-01 | 211835.297 | 1587405.698 | 459.157 | 104 | -78 | 139.9 |
| UGCB20-185 | ESUG13-08 | 211936.723 | 1587127.446 | 473.185 | 289 | -33 | 173.74 |
| UGCB20-187 | ESUG13-09 | 211937.135 | 1587127.316 | 473.097 | 289 | -41 | 163.07 |
| UGCB20-188 | ESUG13-05 | 211938.415 | 1587127.499 | 473.078 | 305 | -83 | 232.56 |
| CB20-433 | ESSI5-05 | 212112.563 | 1587258.566 | 509.052 | 279 | -37 | 301.14 |



SECTION A - VIEW NORTH EAST - Location of Drillholes



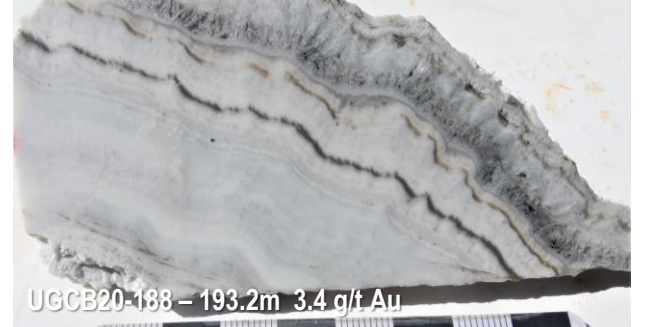
UGCB20-188 - 180.18m 87.2 g/t Au, 80 g/t Ag



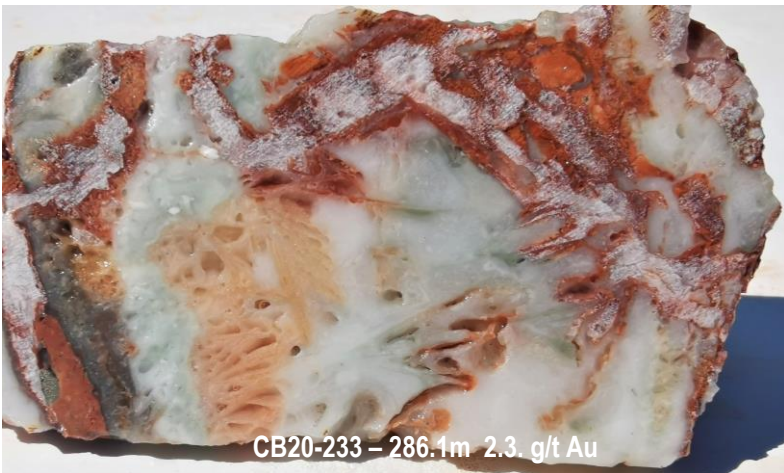
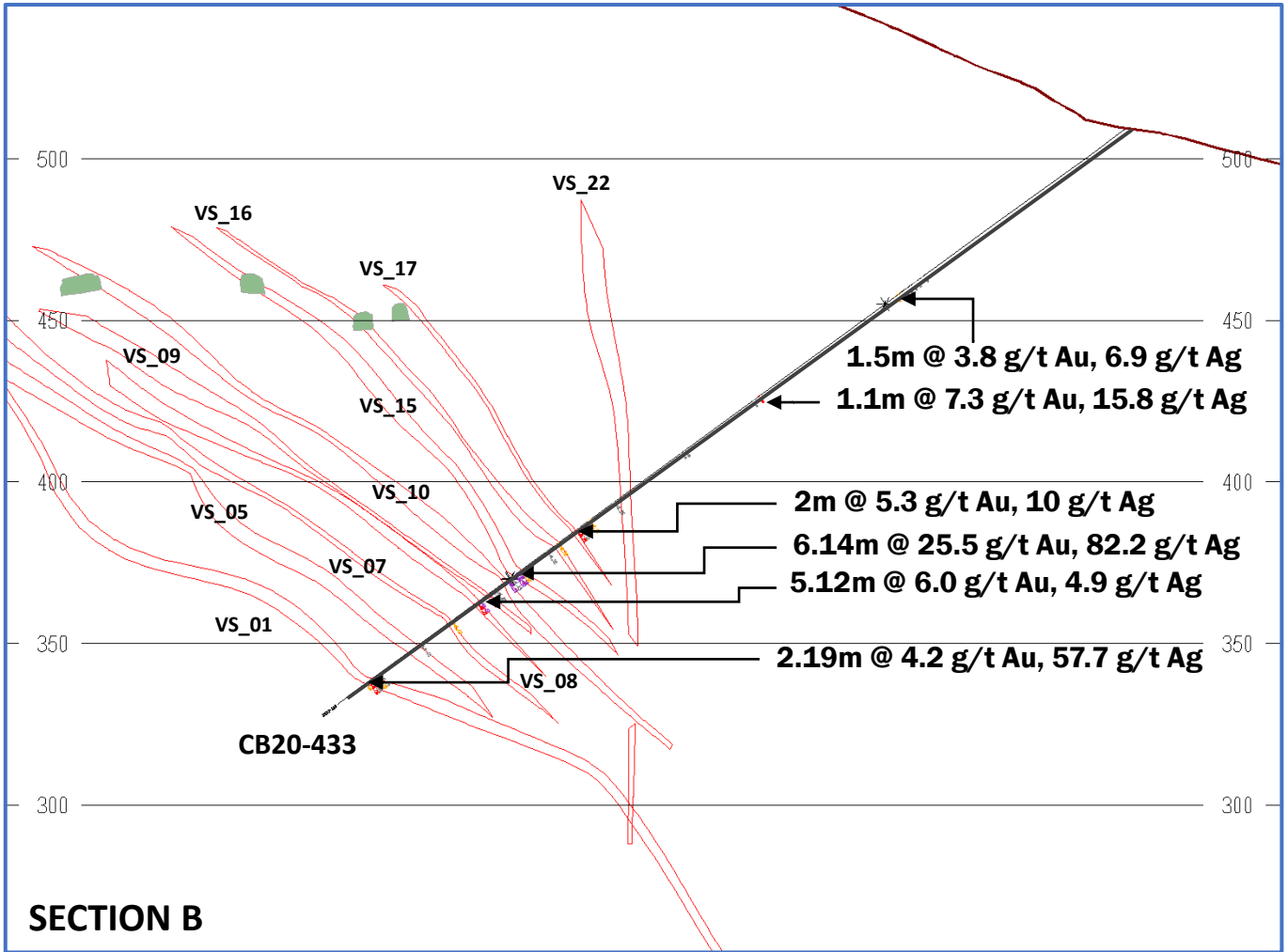
9.0 m @ 26.0 g/t Au, 26.8 g/t Ag
VS_01 + VS_21



UGCB20-188 - 180.18m 87.2 g/t Au, 80 g/t Ag



UGCB20-188 - 193.2m 3.4 g/t Au





6.2 m @ 25.2 g/t Au, 56.3 g/t Ag
VS_??



CB20-233 - 235.92m 36.2 g/t Au 99.4 g/t Ag



CB20-233 - 236.25m 36.2 g/t Au
99.4 g/t Ag